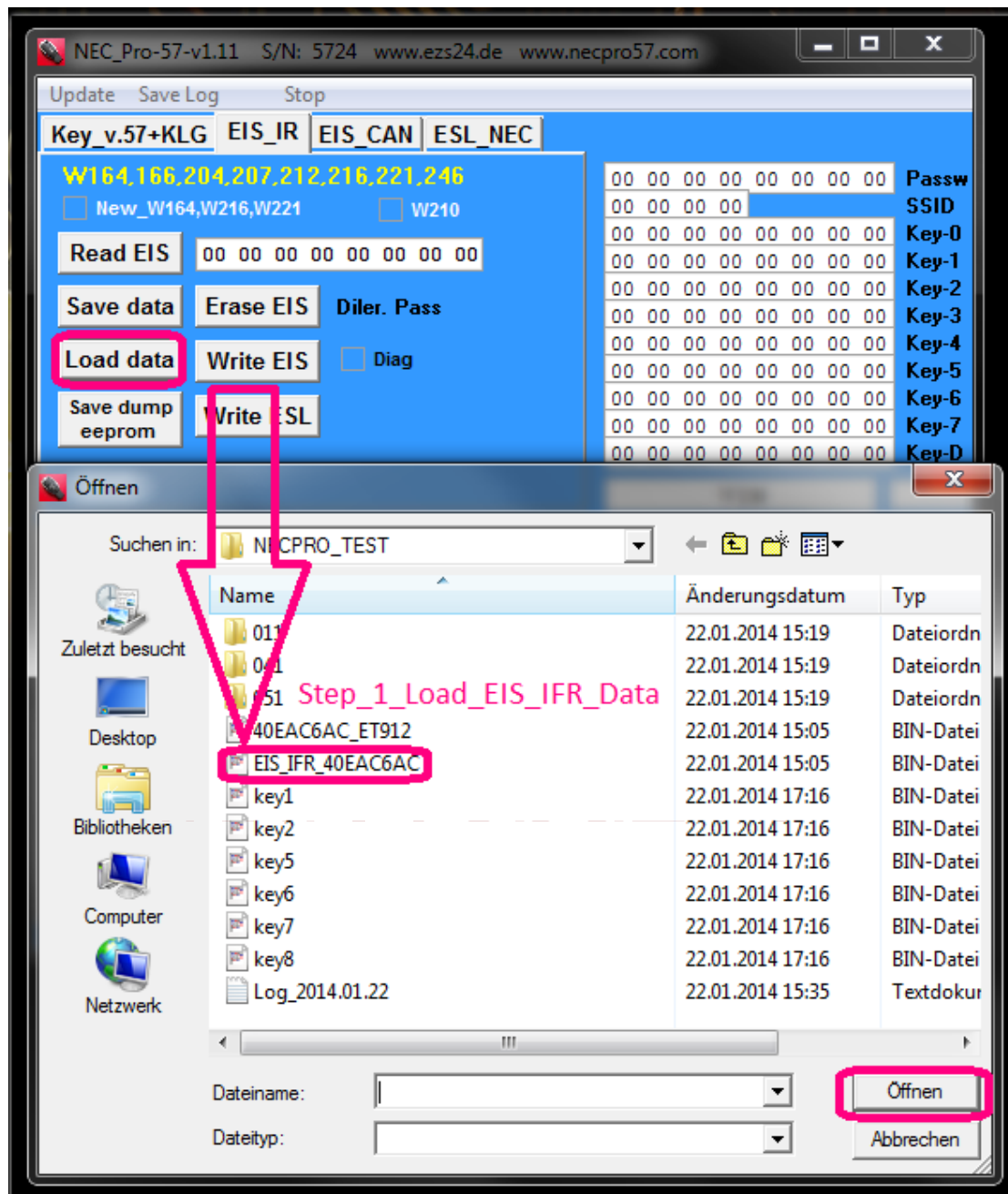


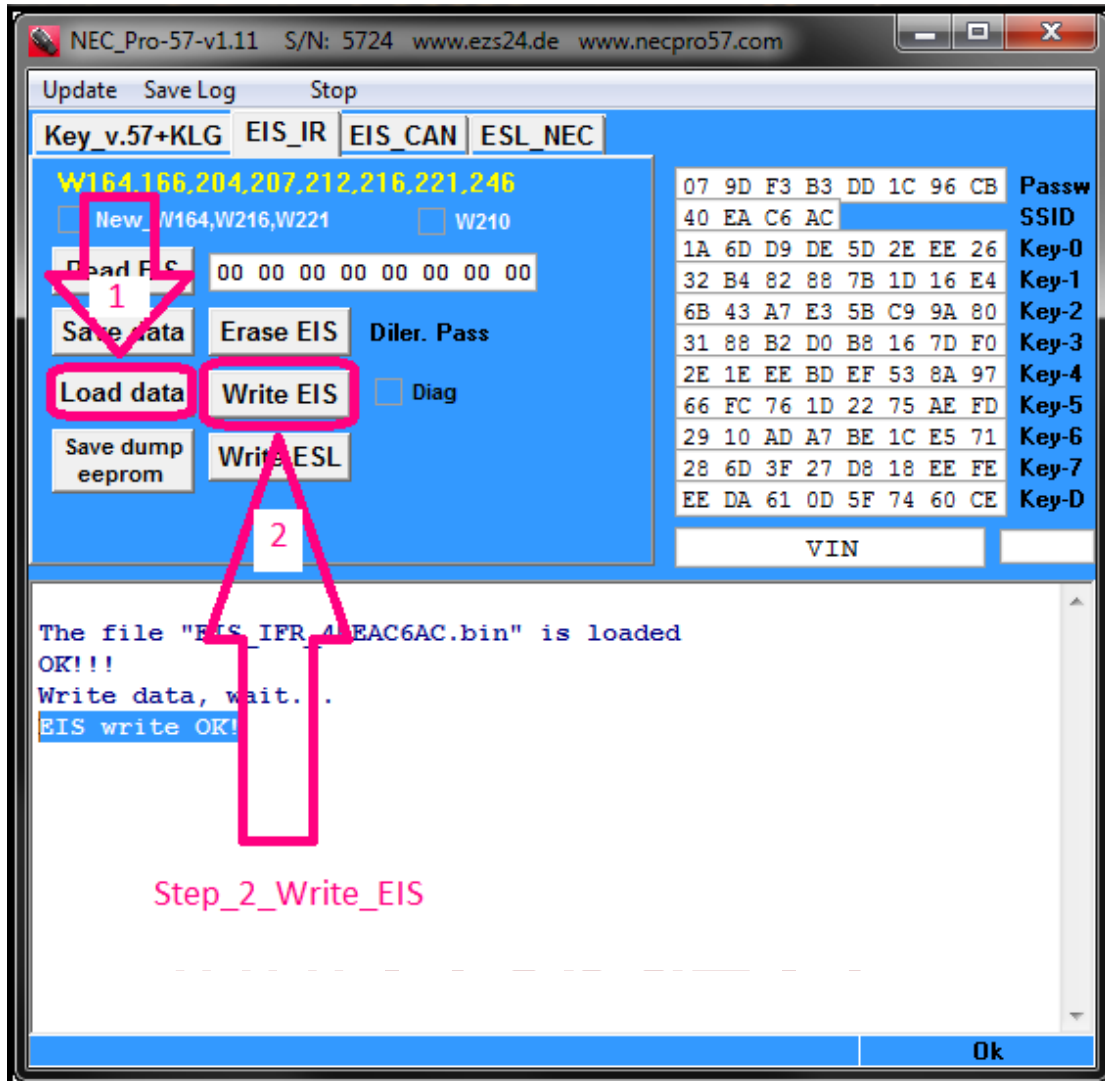
Step 1: Load EIS IFR Data

ステップ 1 : EIS IFR データーをロードしてください。



Step 2: Write EIS

ステップ 2 : EIS を書き込む



Step 3: Read Check EIS

ステップ 3 : EIS を読み込むとチェック

NEC\_Pro-57-v1.11 S/N: 5724 www.ezs24.de www.necpro57.com

Update Save Log Stop

Key\_v.57+KLG EIS\_IR EIS\_CAN ESL\_NEC

W164,166,204,207,212,216,221,246

New\_W164,W216,W221  W210

**Read EIS** 00 00 **ST-3** 00 00

Save data Erase EIS Dinc. Pass

Load data Write EIS  Diag

Save dump eeprom Write ESL

07 9D F3 B3 DD 1C 96 CB	Passw
40 EA C6 AC	SSID
1A 6D D9 DE 5D 2E EE 26	Key-0
32 B4 82 88 7B 1D 16 E4	Key-1
6B 43 A7 E3 5B C9 9A 80	Key-2
31 88 B2 D0 B8 16 7D F0	Key-3
2E 1E EE BD EF 53 8A 97	Key-4
66 FC 76 1D 22 75 AE FD	Key-5
29 10 AD A7 BE 1C E5 71	Key-6
28 6D 3F 27 D8 18 EE FE	Key-7
EE DA 61 0D 5F 74 60 CE	Key-D

VIN

Last Hash-D: EE DA 61 0D 5F 74 60 CE

Last used key : ---  
Prev used key : ---  
Initialized : Yes  
TP Removed : Yes  
Personalized : Yes  
Activated : YES  
Neutralized : No  
EIS : Series  
All keys unblocked!  
All keys no used!

Step\_3\_Read-Check-EIS

Read EIS ...