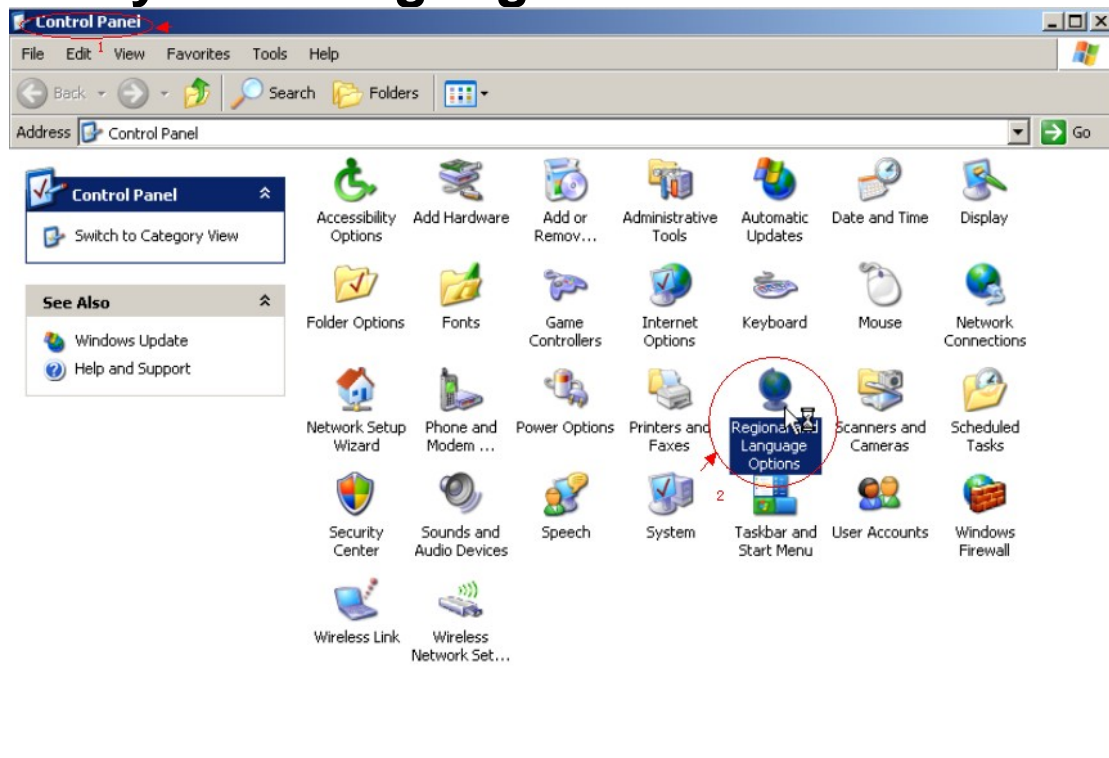
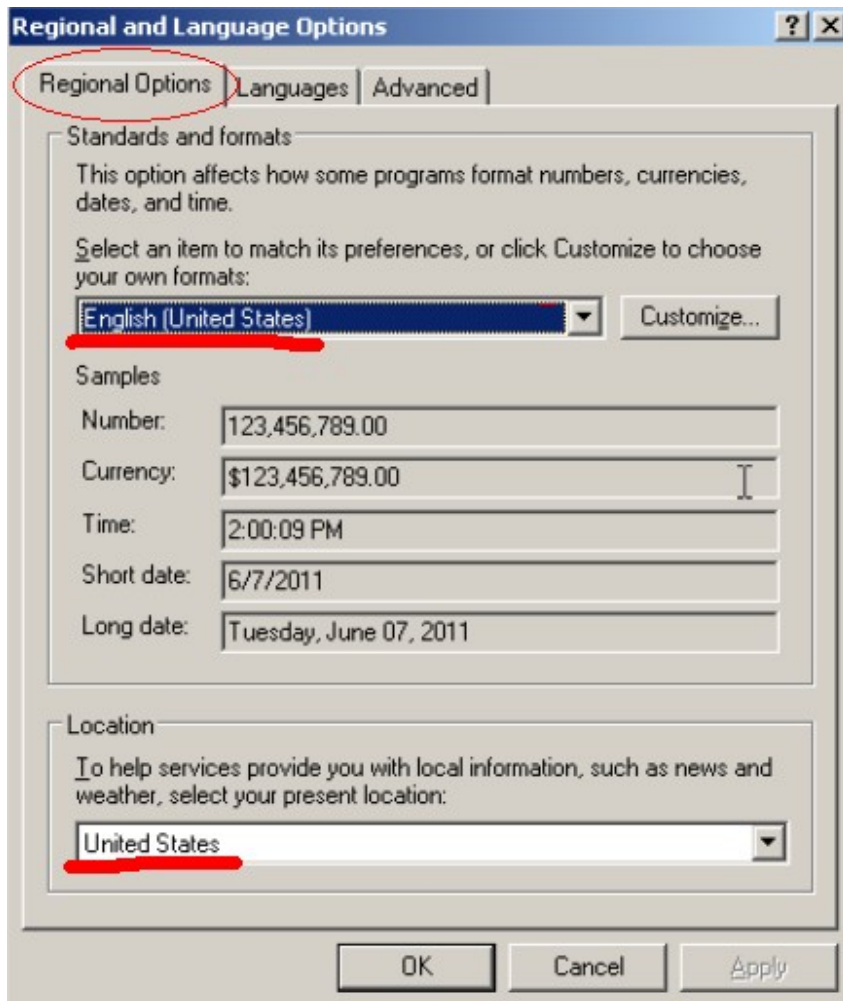
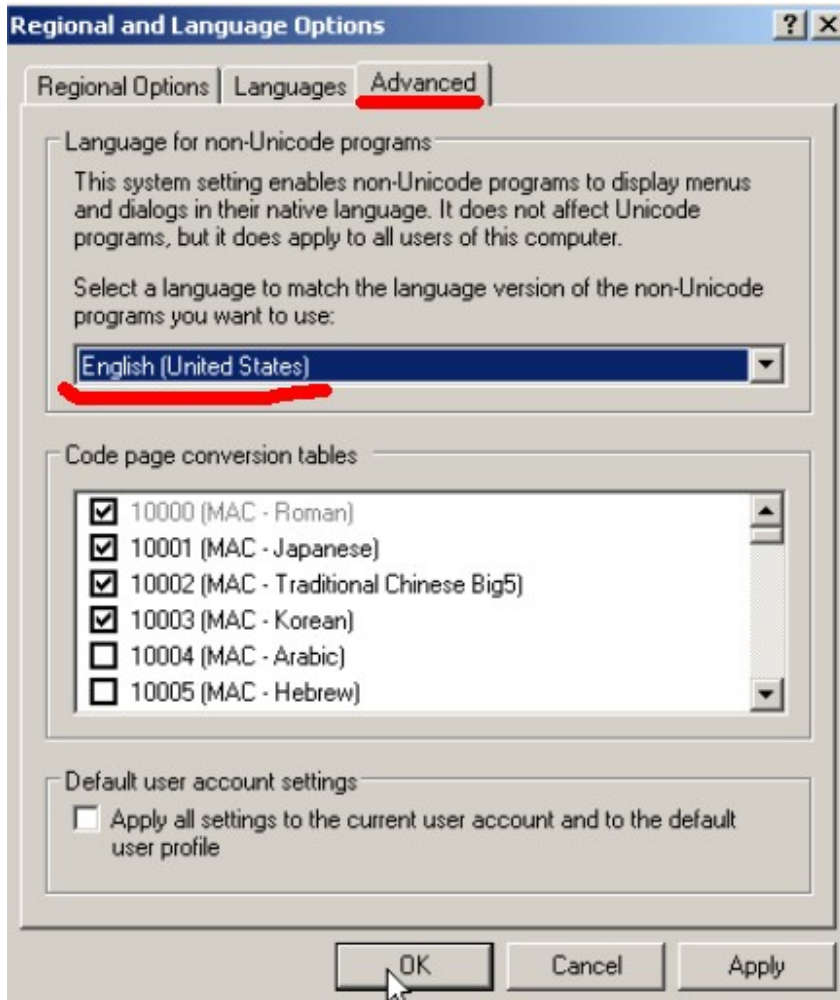


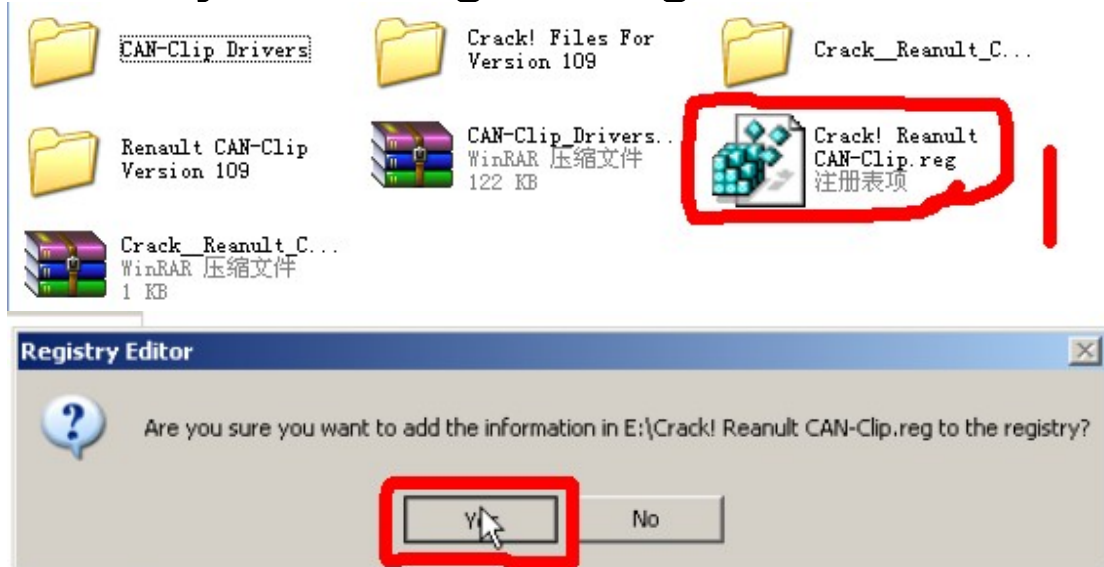
# 1 system language: select American English

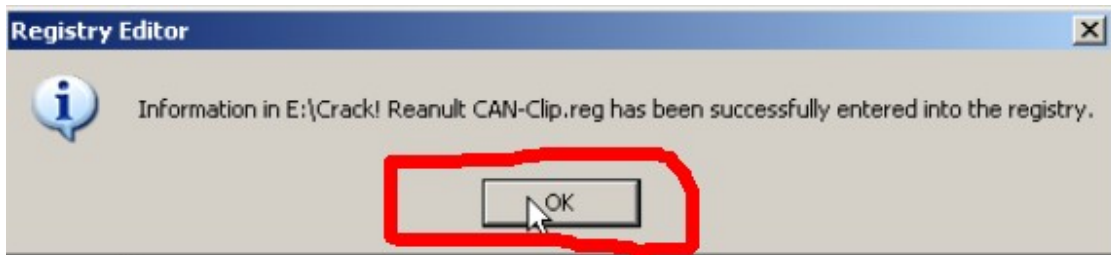




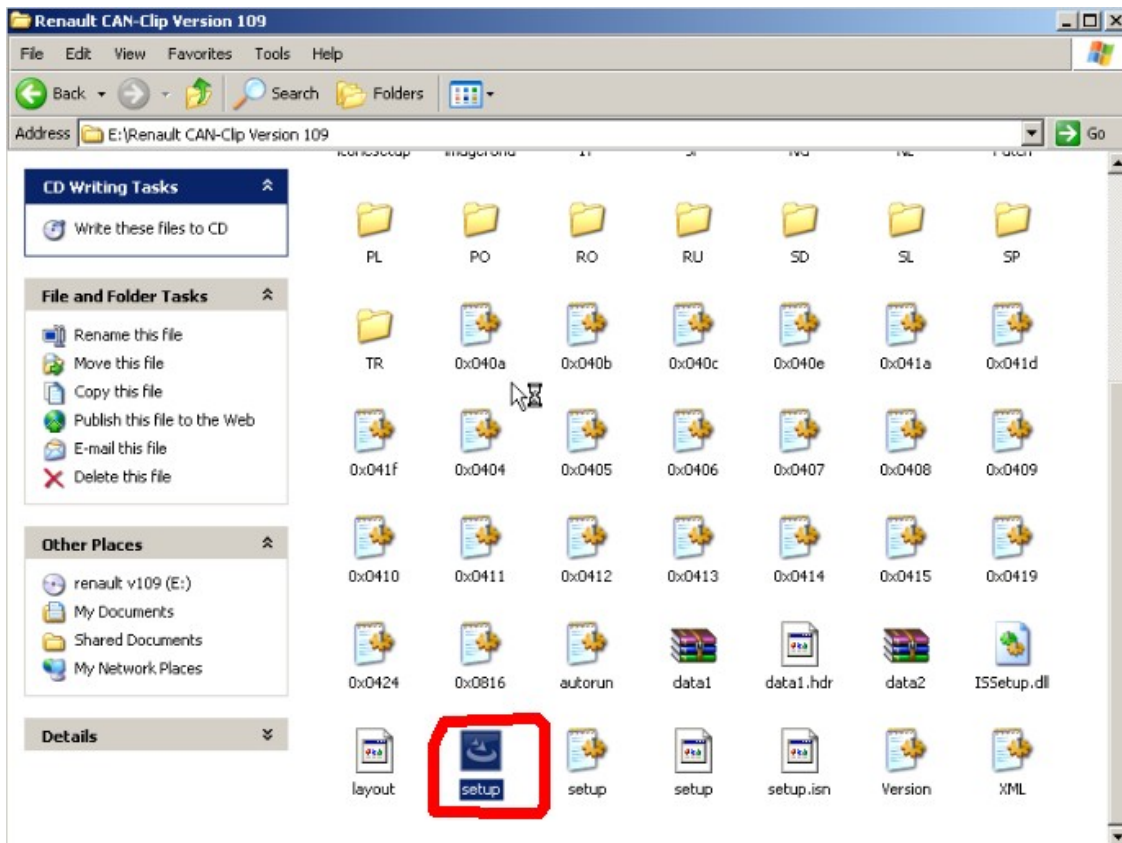


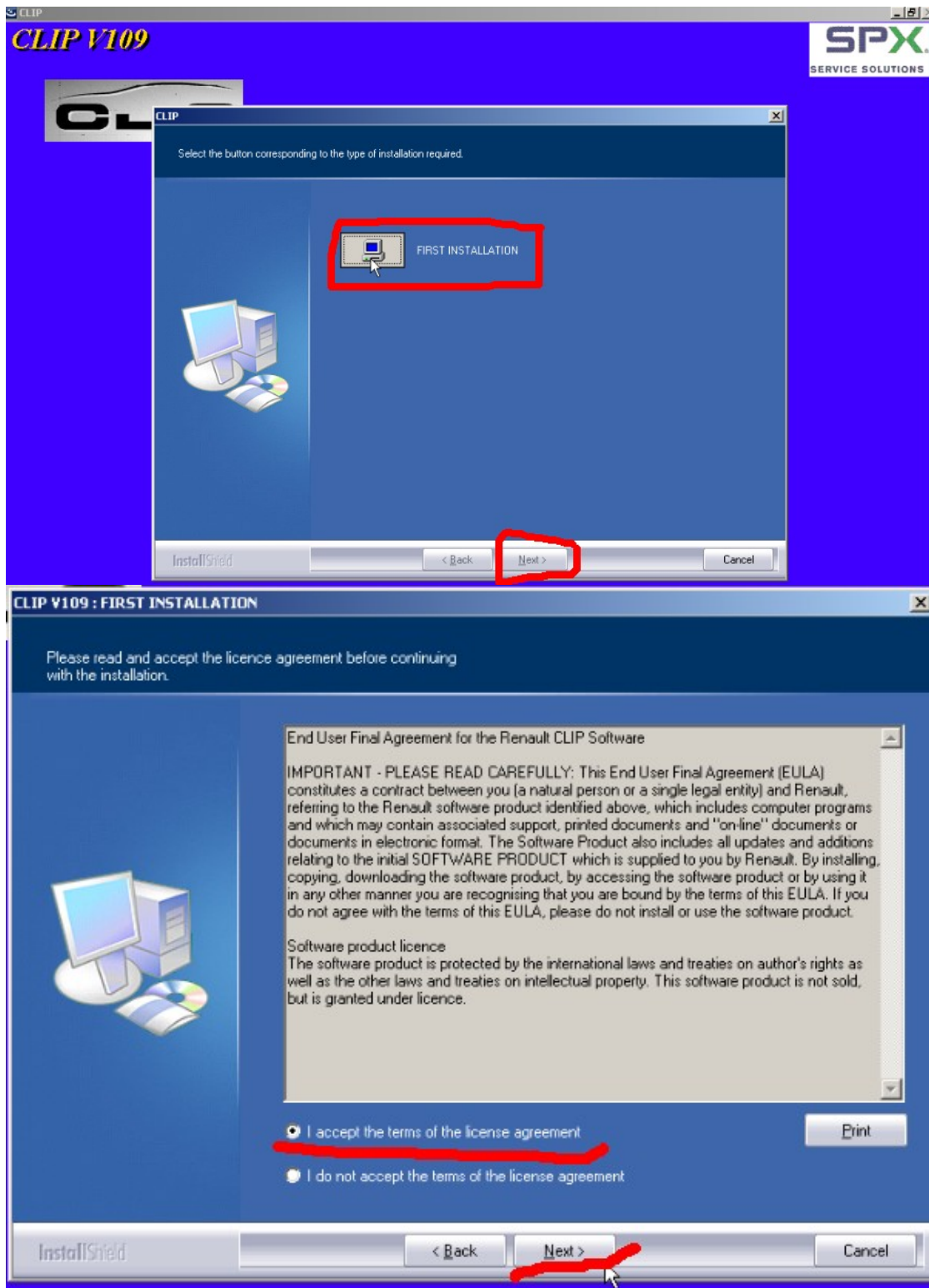
## 2 Firstly enter registering table



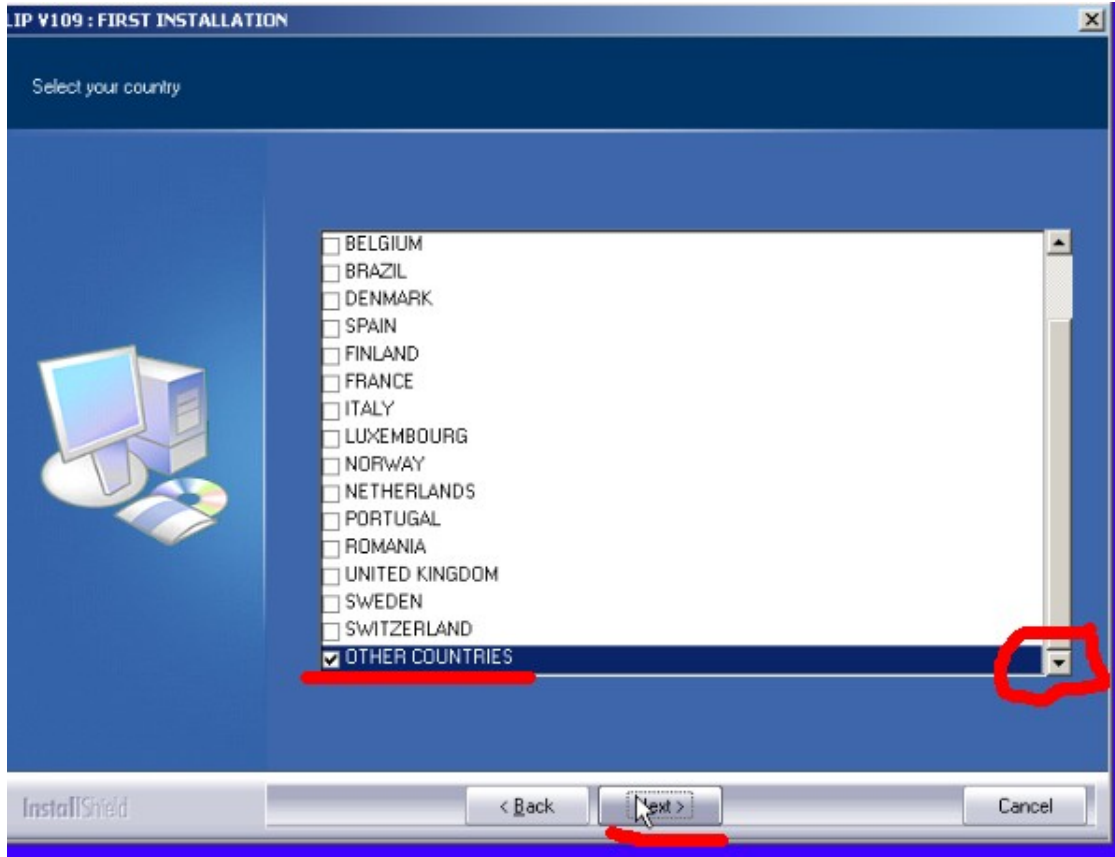


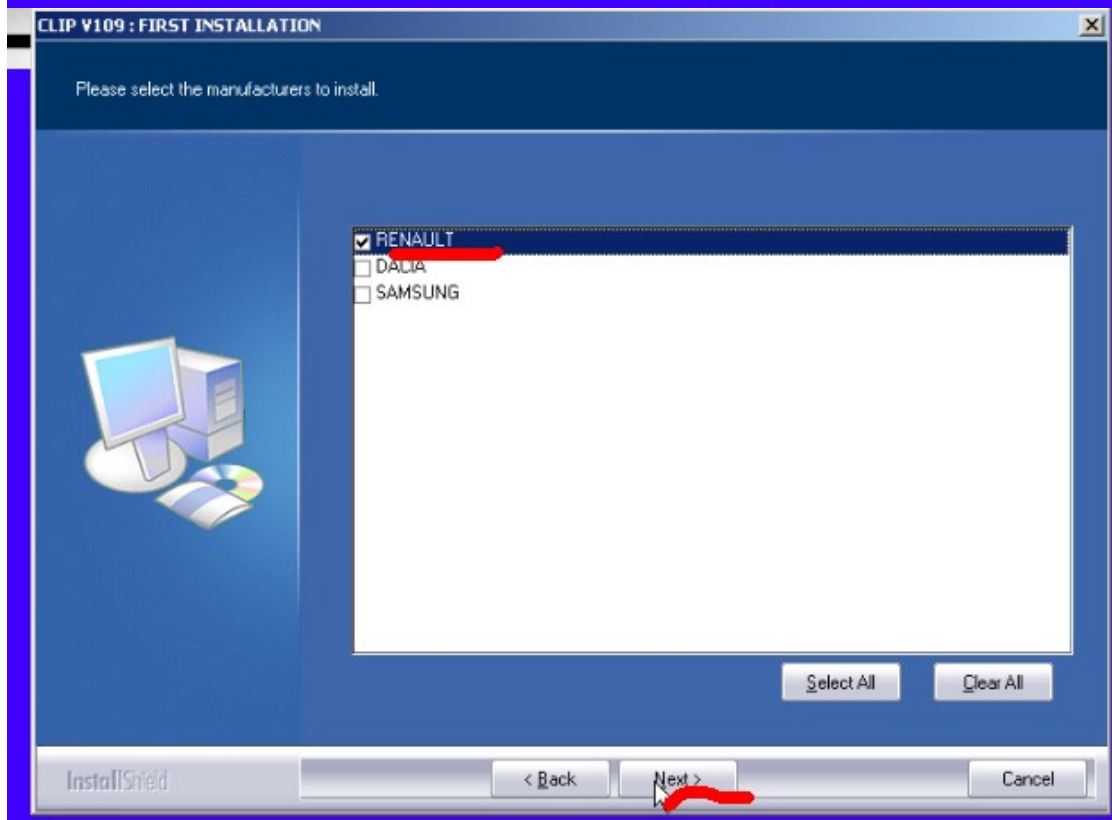
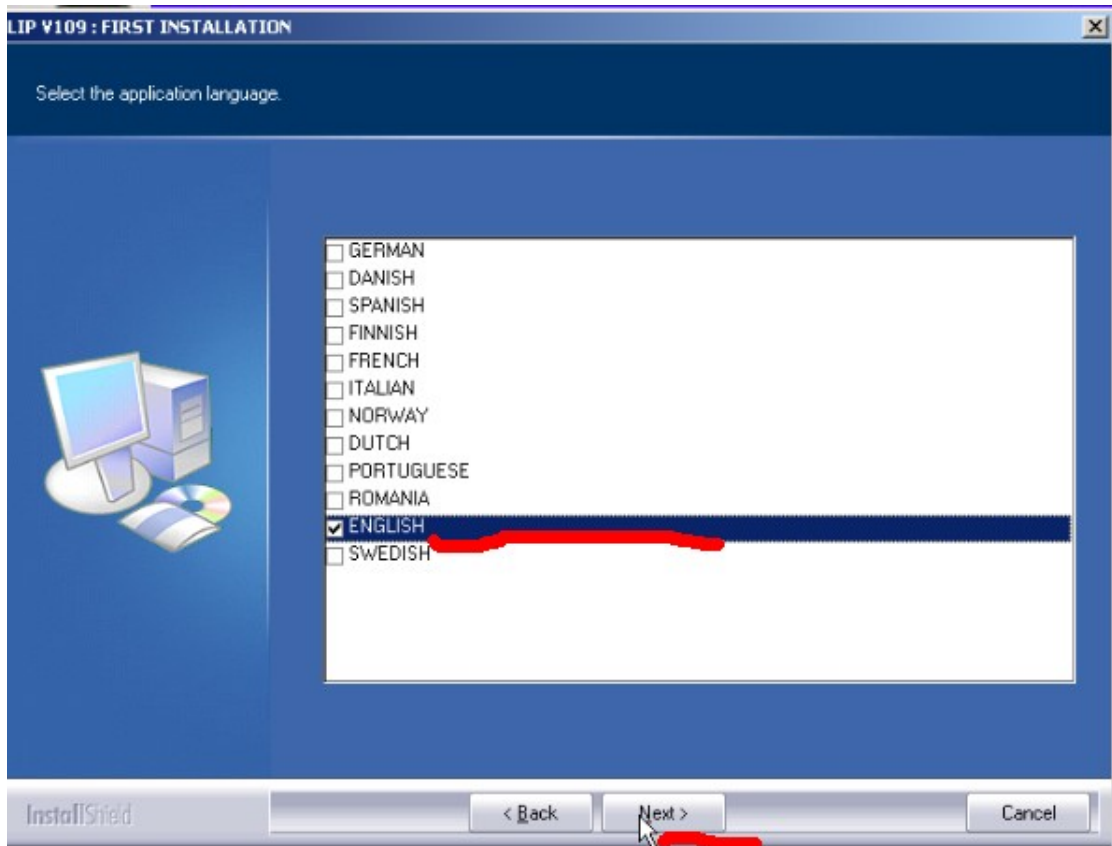
### 3 install 【Renault can-clip v109】

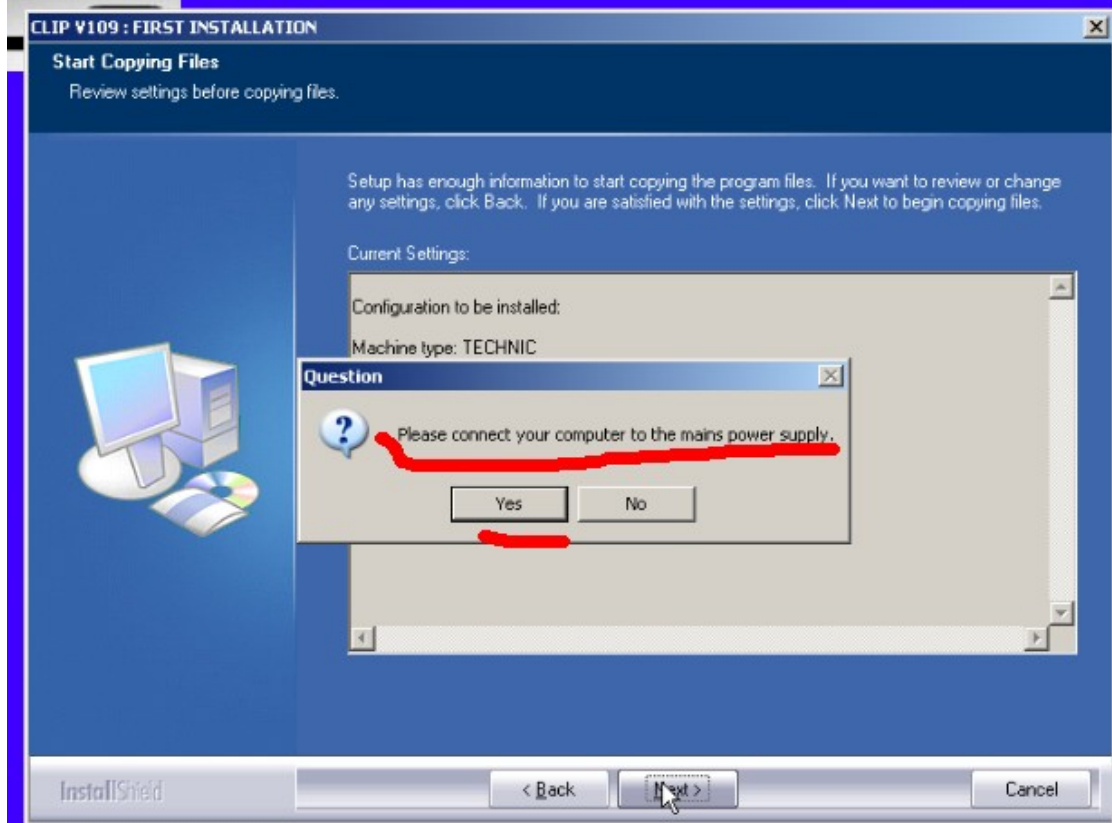
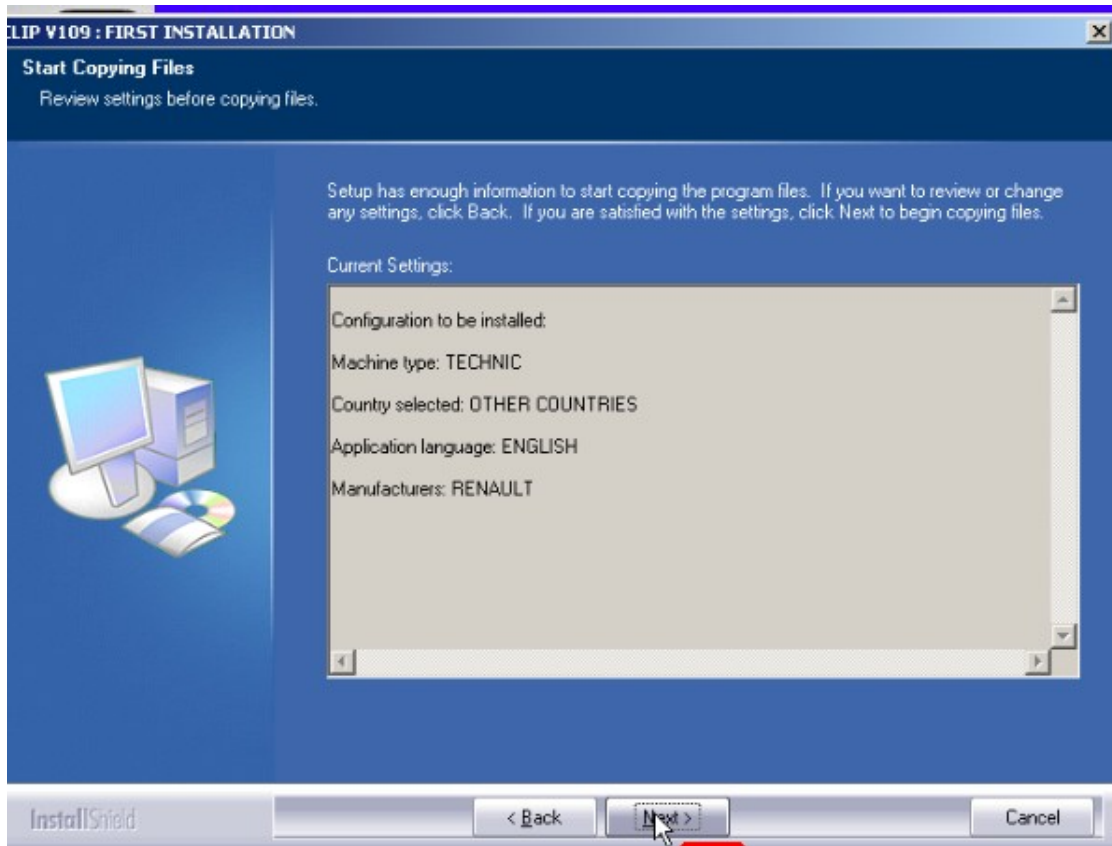




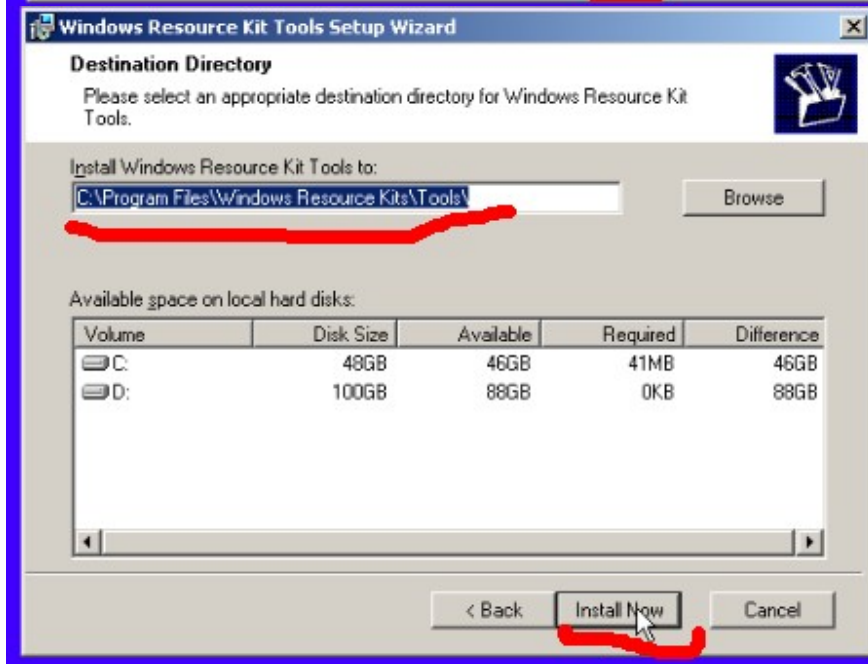
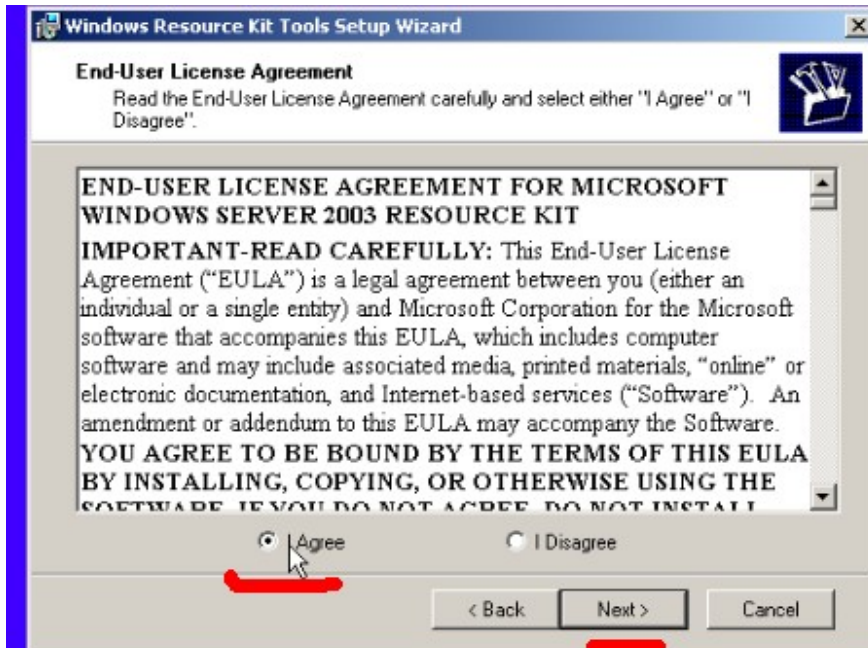
**select the language you want**

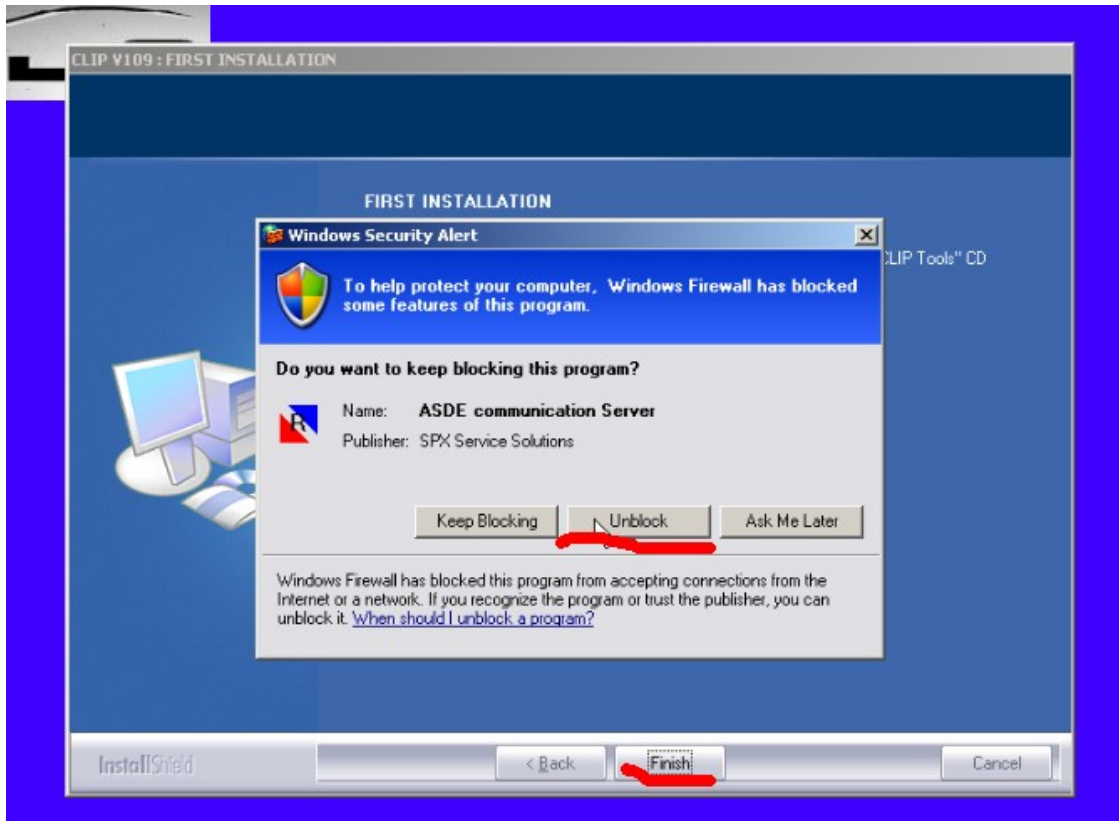












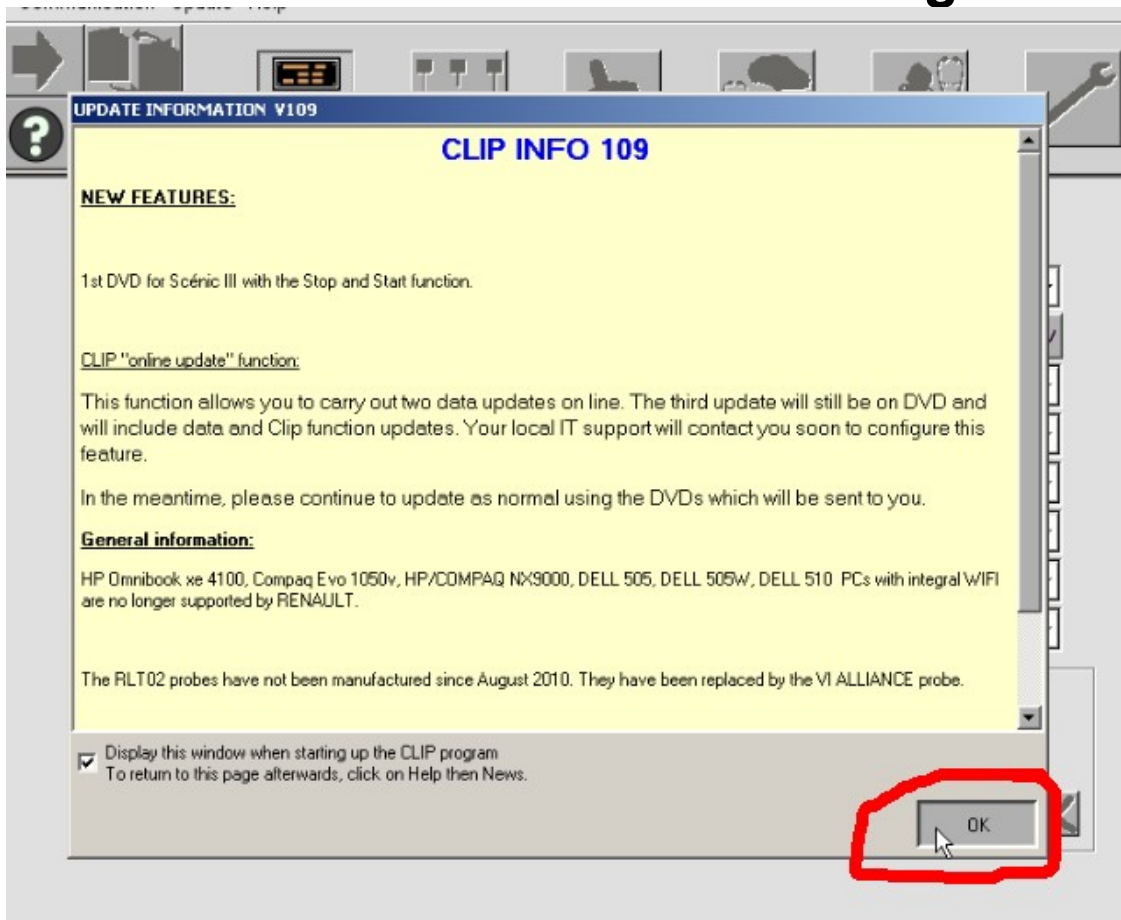
#### 4 connect device to car-connect USB with computer to install driver



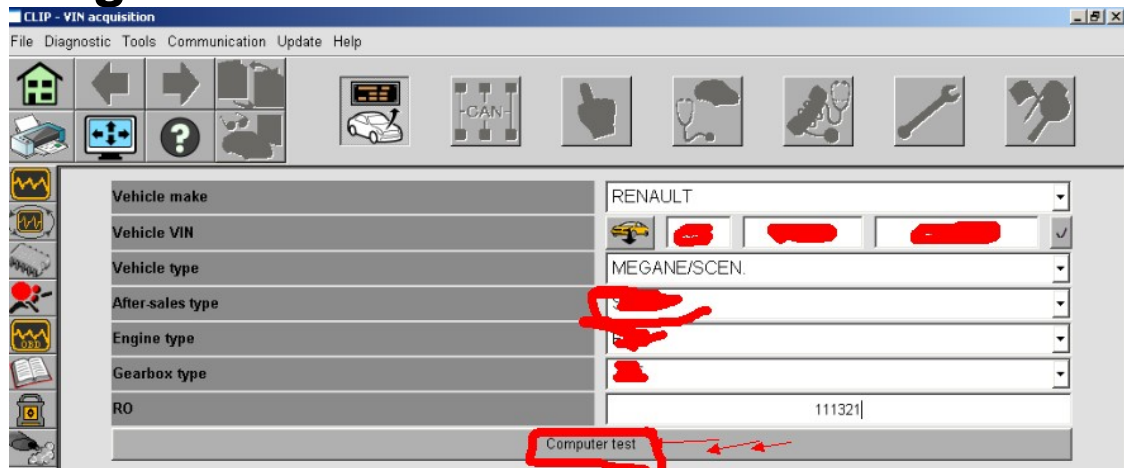




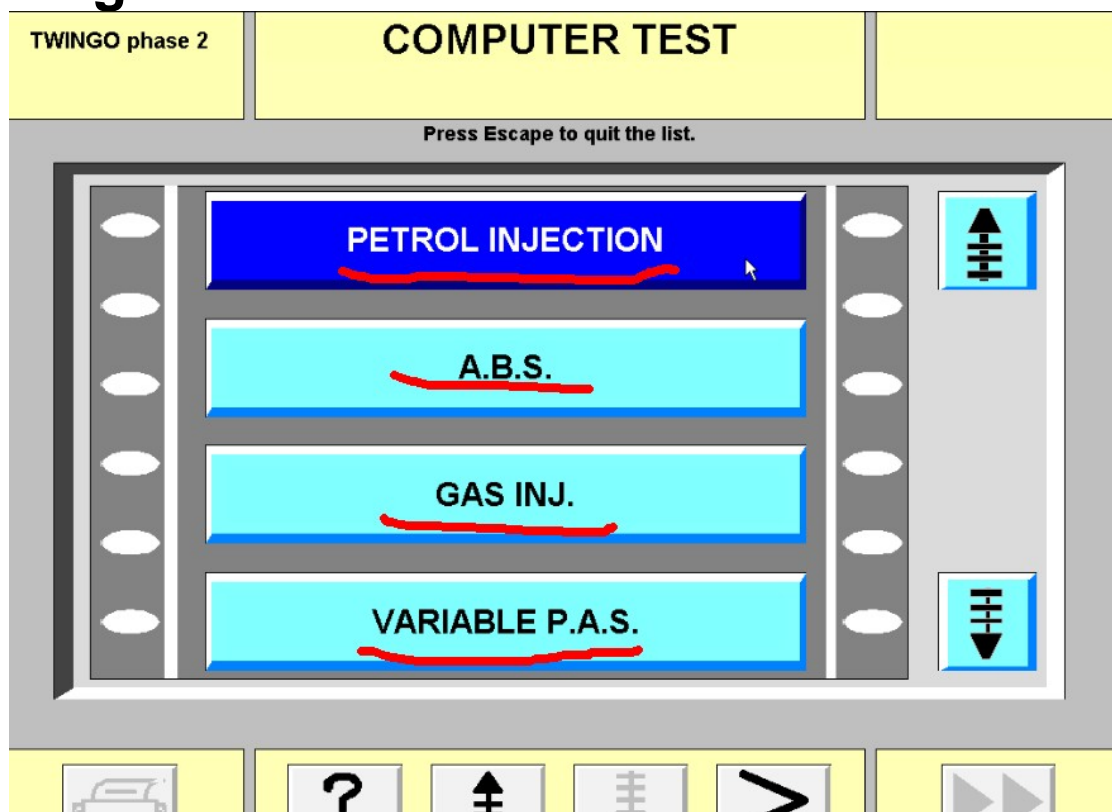
## 5 run the software and start to diagnose







# Enter the vehicle VIN to communicate and diagnose



# select the specific control unit you want to diagnose



# Finish-diagnosing

SA09	<b>FAULTS TEST</b>	PETROL INJECTION
TEST WITH ENGINE STOPPED AND THEN RUNNING.		
<u>DF014</u>	<u>CANISTER PURGE SOLENOID VALVE CIRCUIT</u>	CO 
<u>DF118</u>	<u>REFRIGERANT PRESSURE SENSOR CIRCUIT</u>	
		
		
STATUSES AND PARAMETERS	ERASING	DEAL WITH FAULTS