

TOYOTA TIS Installation Guide



X-Horse Electronics Co., Ltd.

Table of Contents

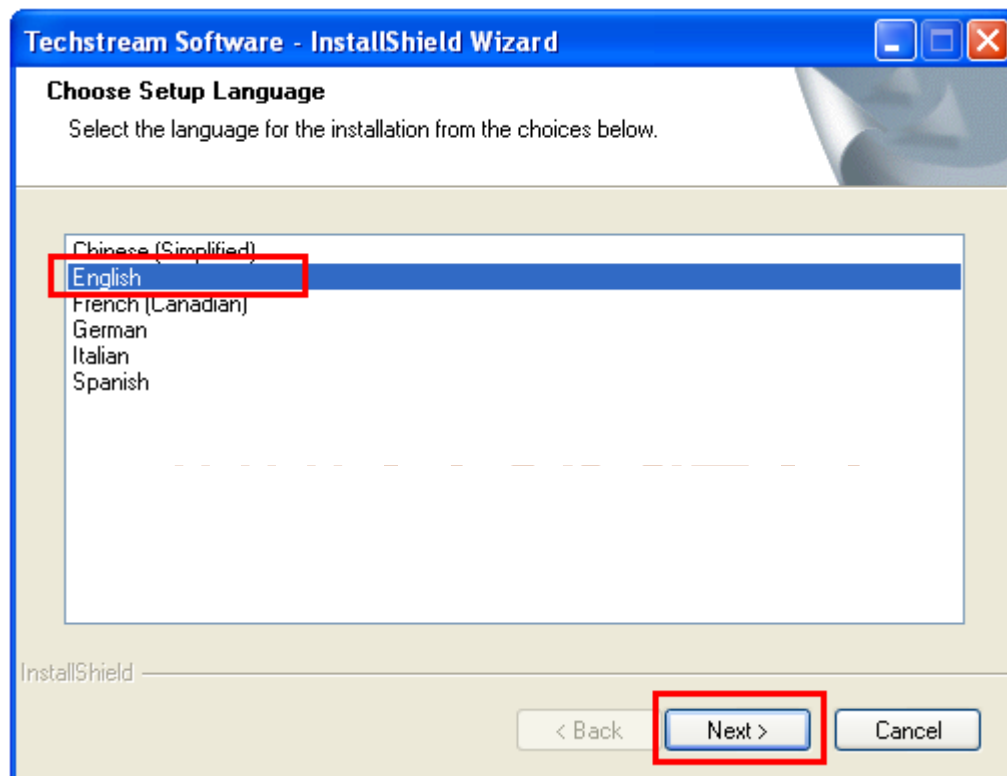
| | |
|-----------------------------|---|
| 1. Install TOYOTA TIS | 3 |
| 2. Install MPCI Driver..... | 6 |
| 3. TIS Registration..... | 9 |

1. Install TOYOTA TIS

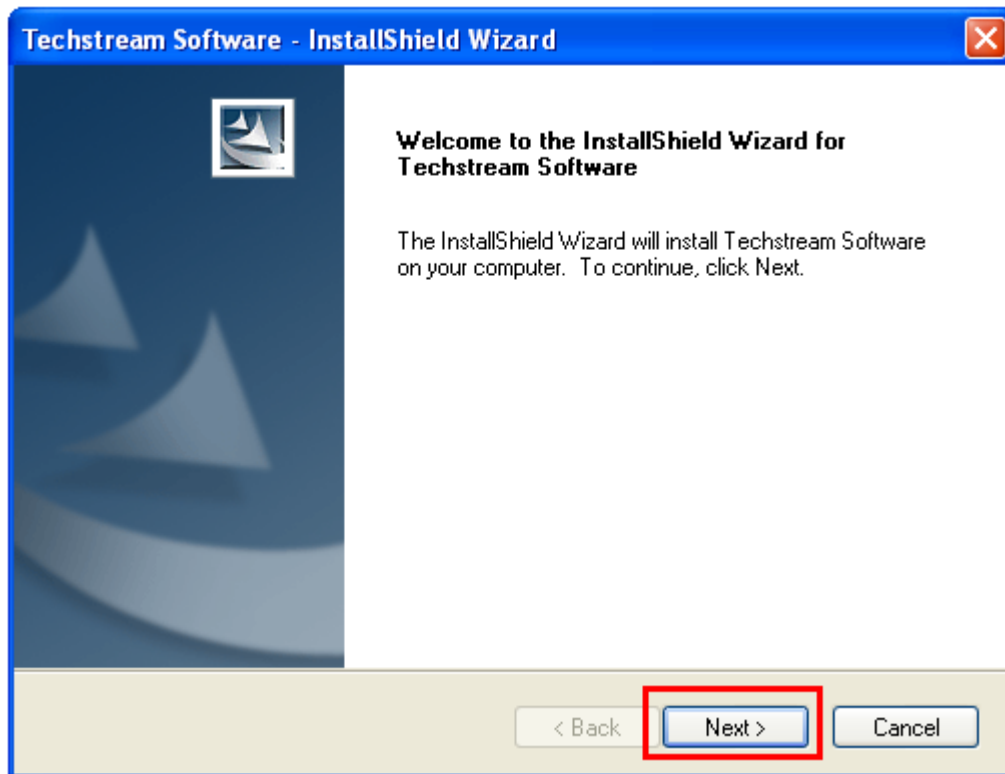
- Double-click TIS_Setup to start installation



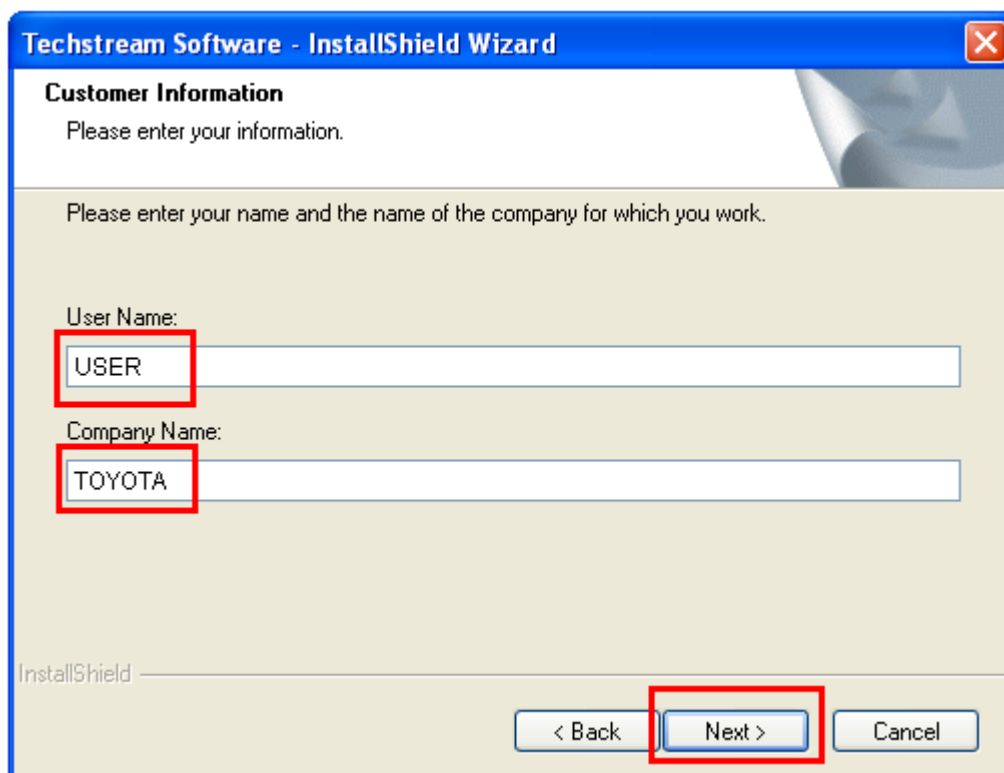
- Select language, then Click Next



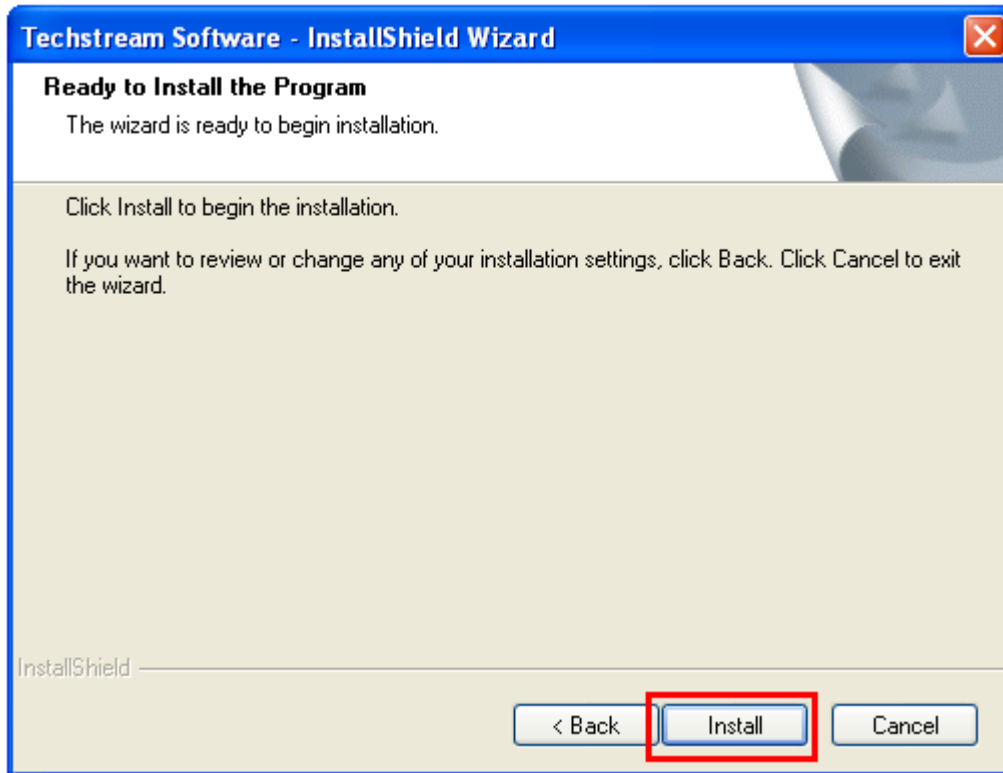
- Click Next



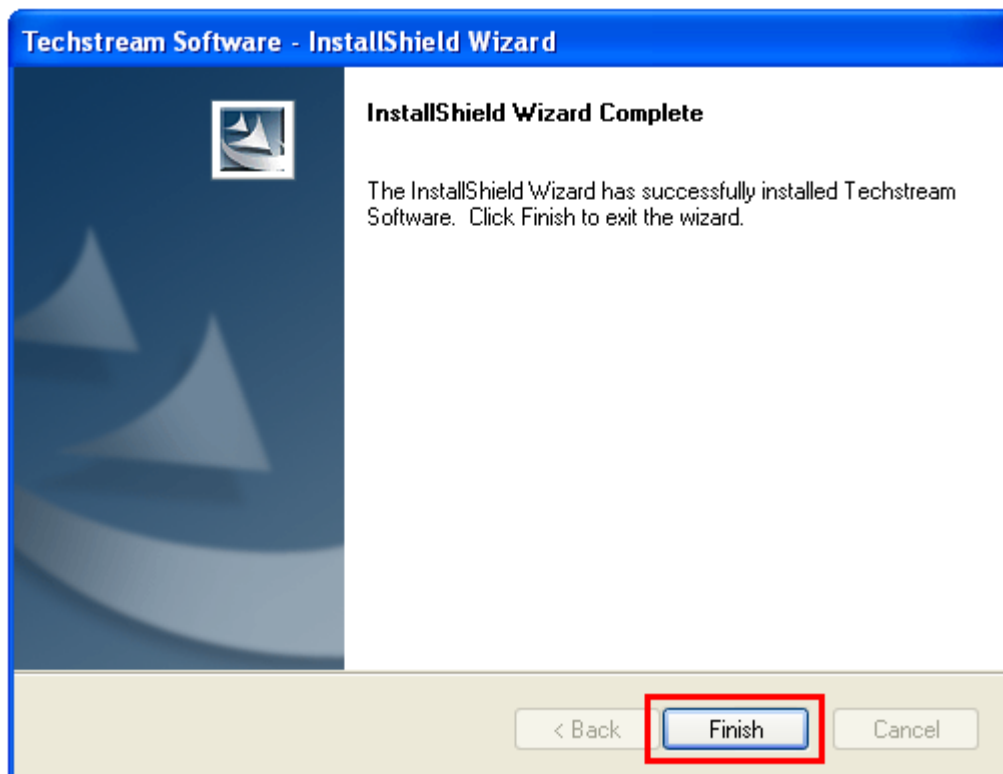
- Enter Customer Information, then Click Next



- **Click Install**



- **Click Finish**

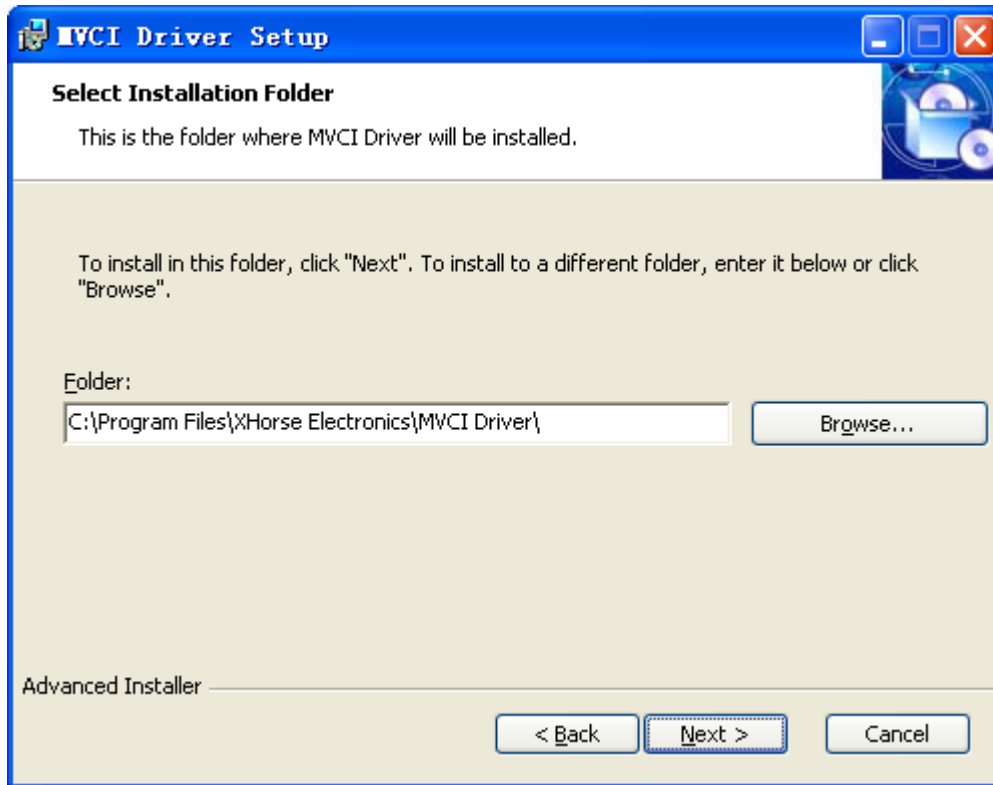


2. Install MVCI Driver

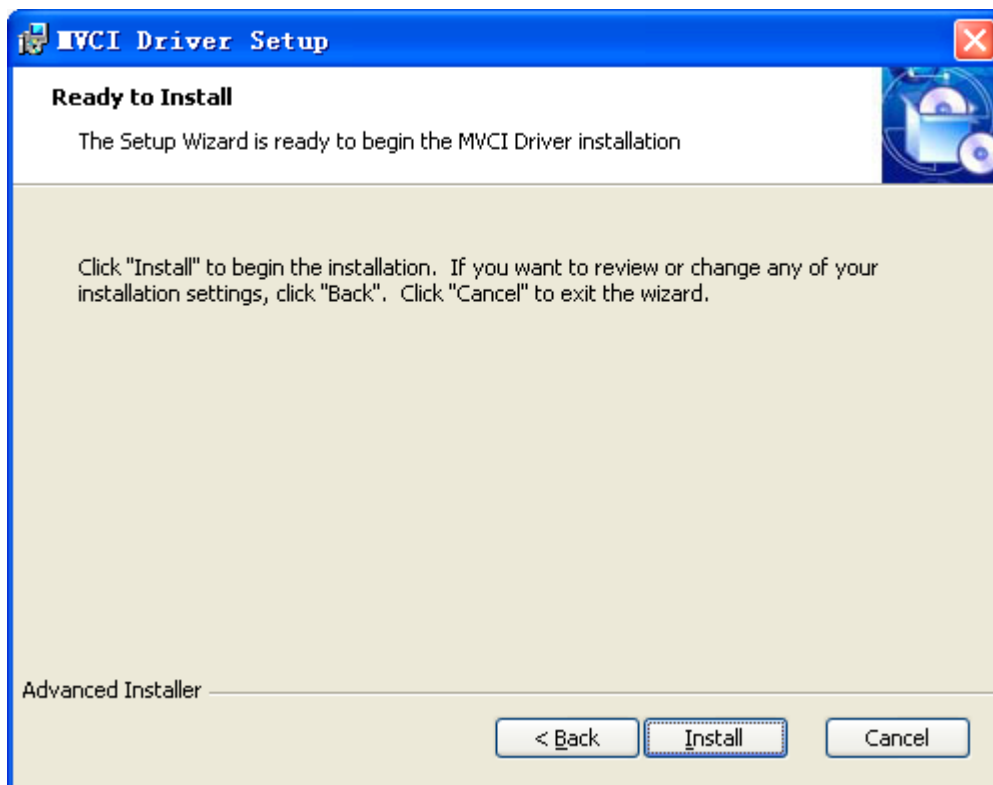
- Click Next



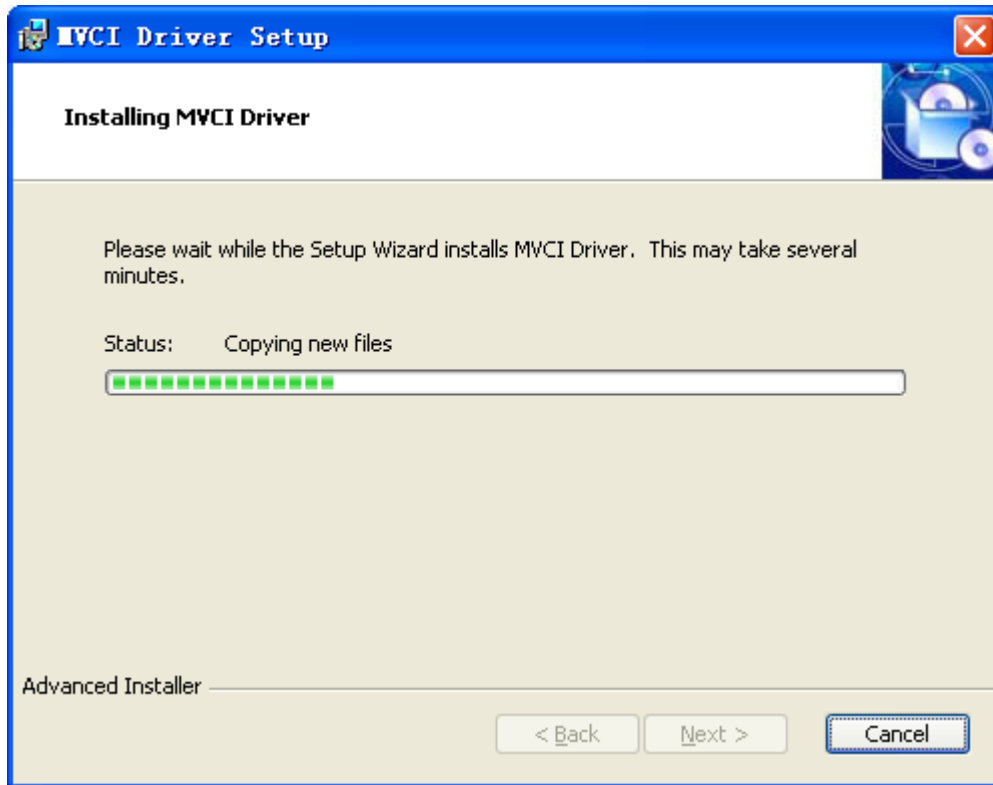
- **Select installation folder, then click Next**



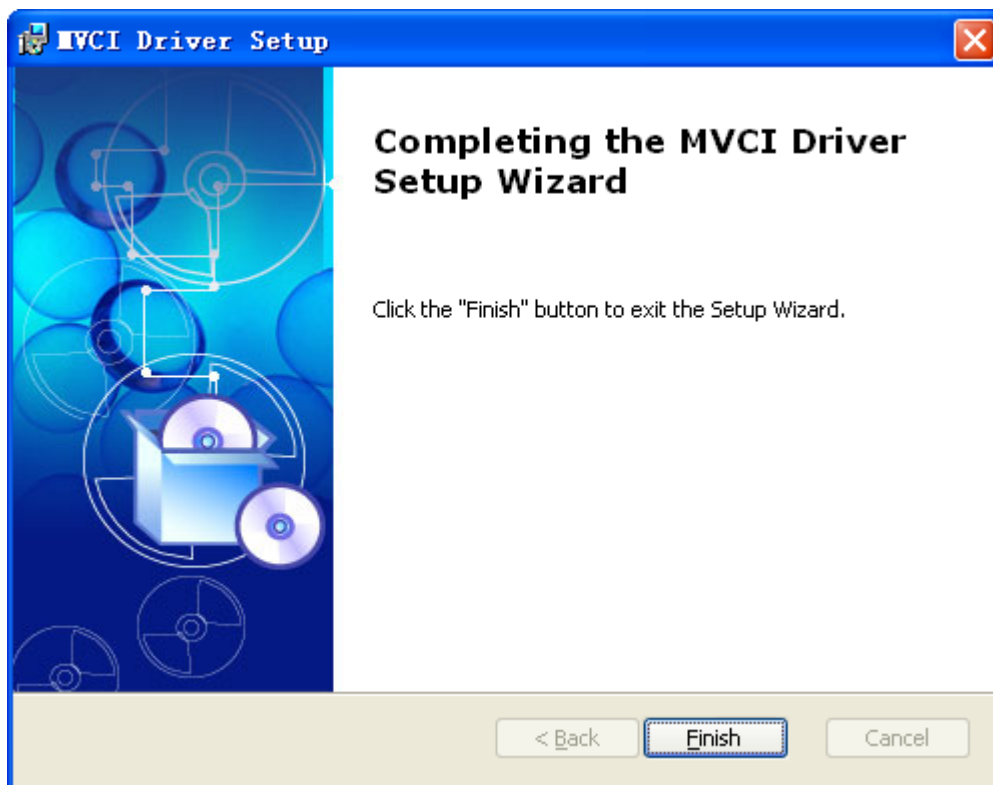
- **Click Install to begin installation**



- **Installing...**



- **Click Finish to exit installation**

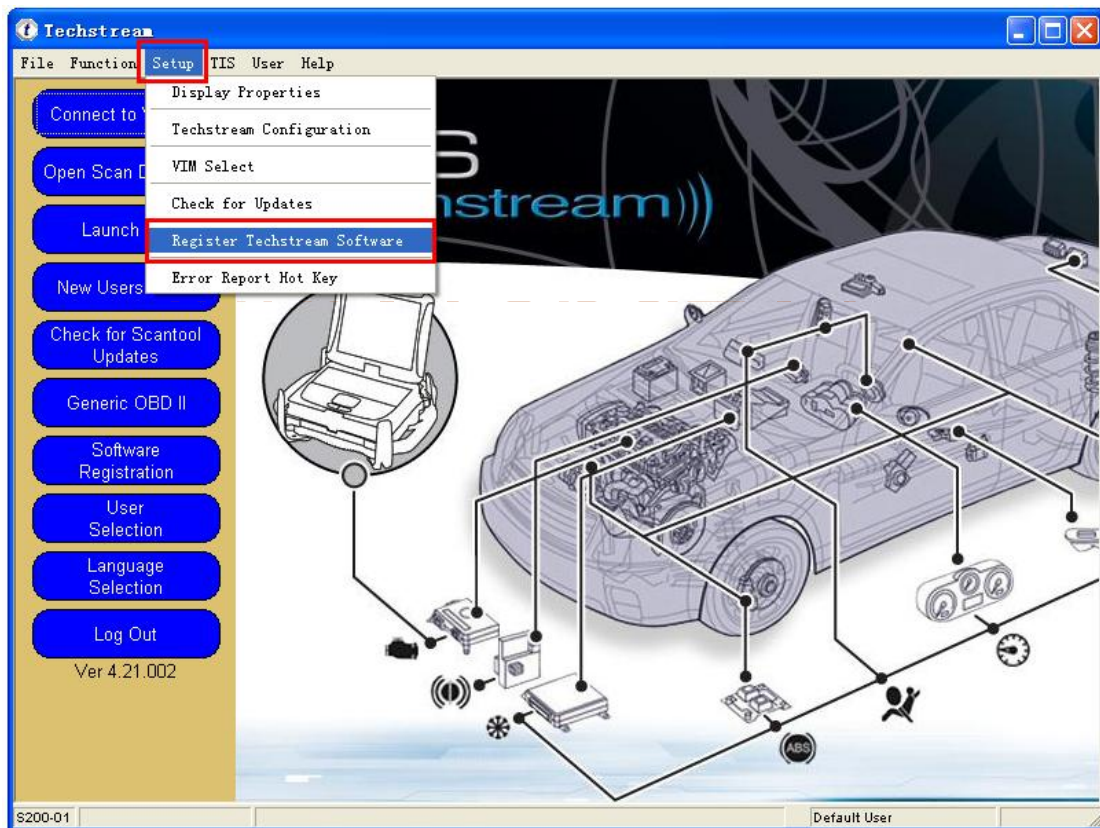


3. TIS Registration

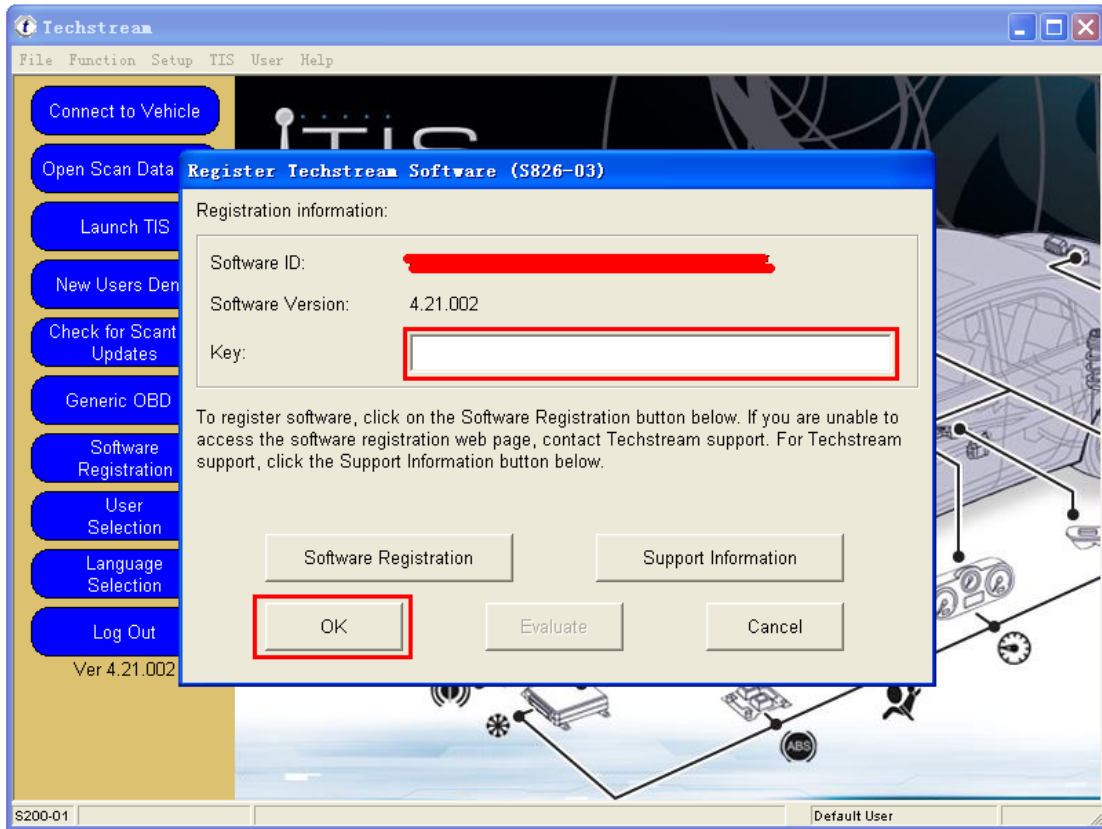
- Double-click Techstream shortcut on desktop to start TIS



- Click Setup, then Click Register Techstream Software



- Enter the key, then Click OK



Please contact your distributor for support.