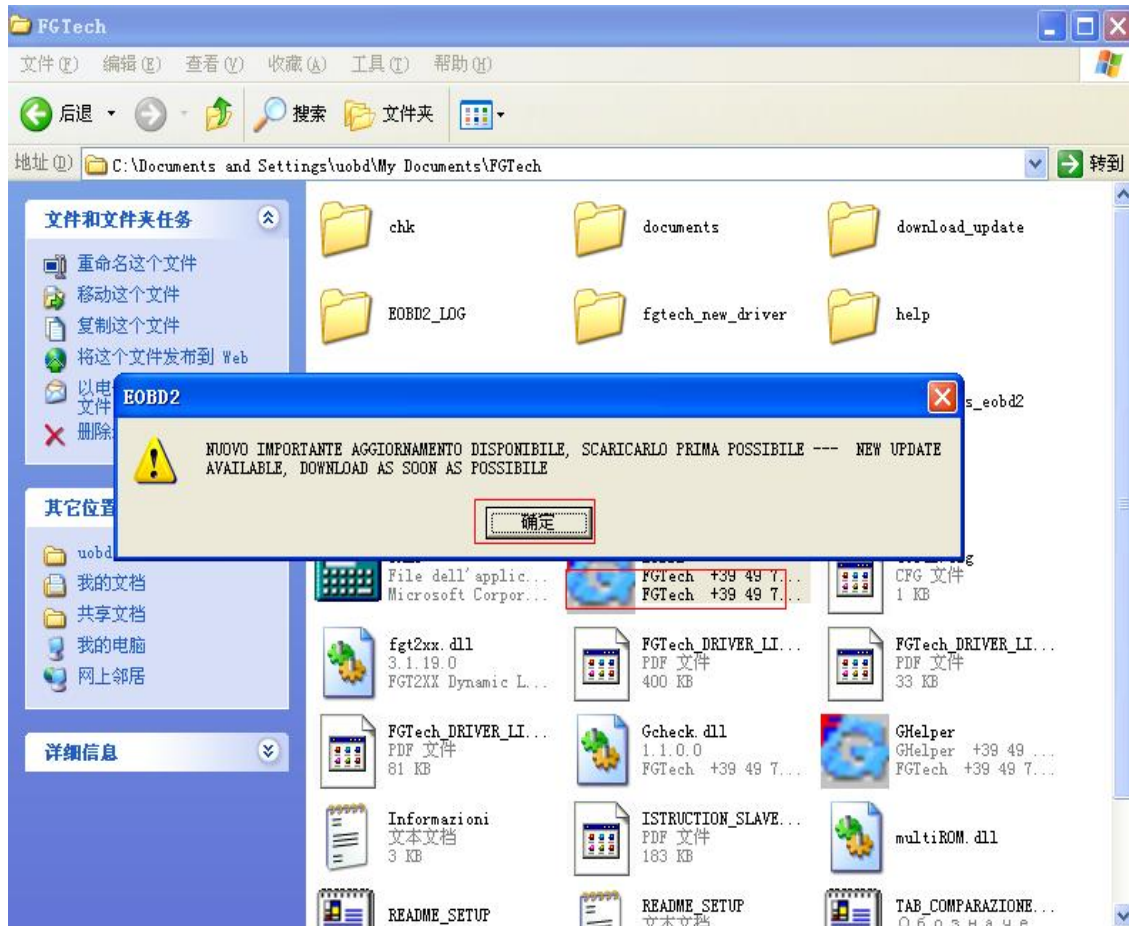


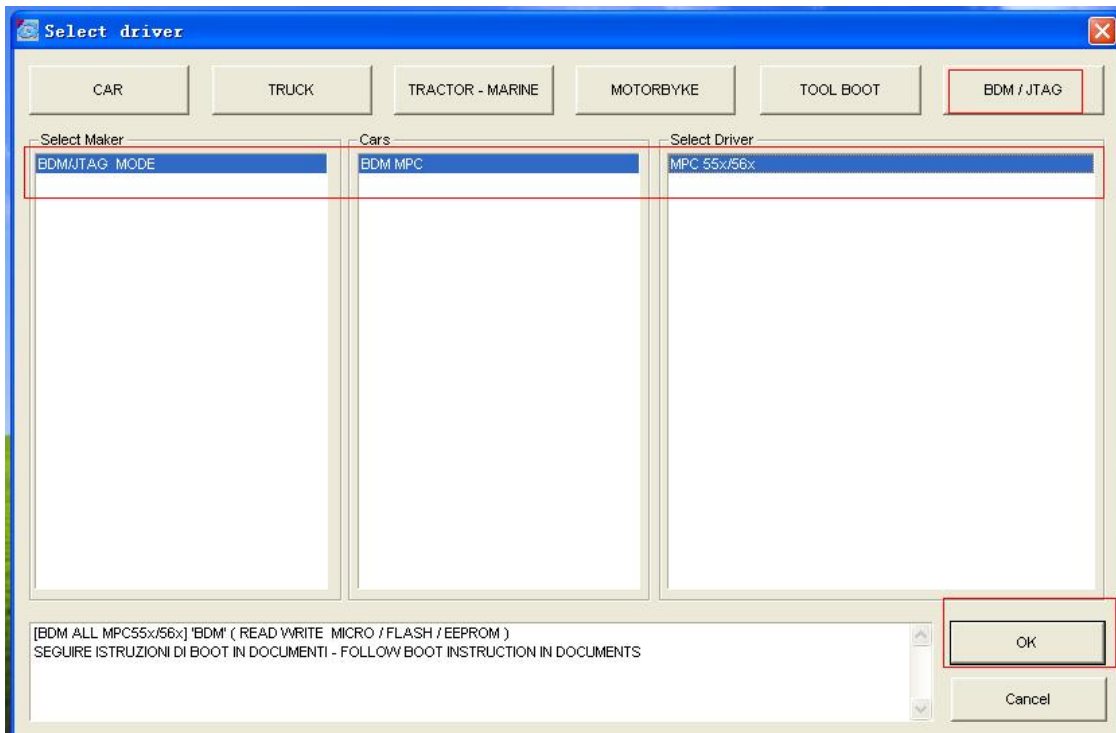
www.jobd2.jp

1. Open the software and then click ok

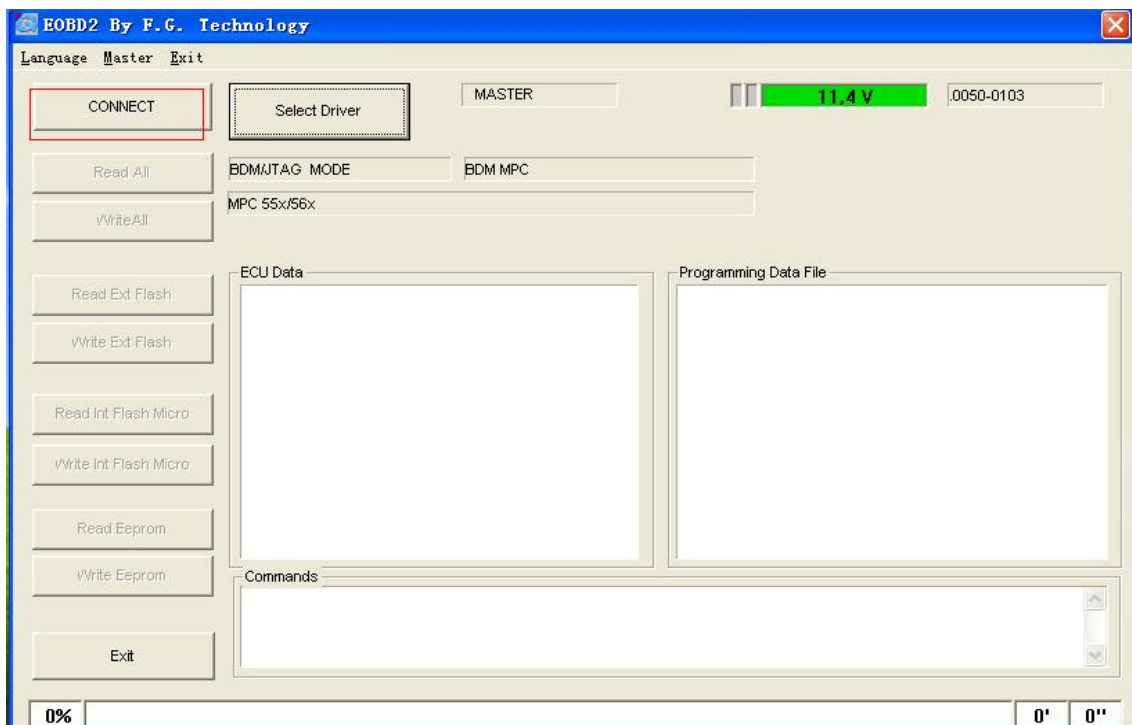


2. In the screen of Vehicles, please choose BDM\JTAG and click ok

www.jobd2.jp

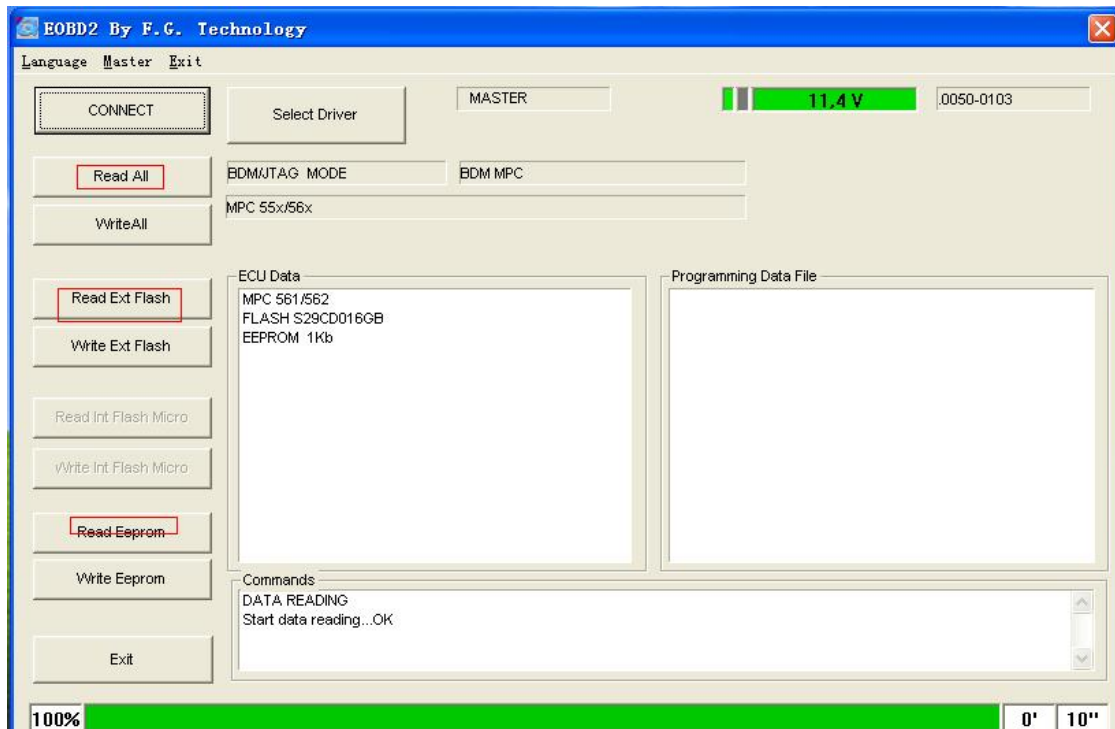


3. Choose connect button

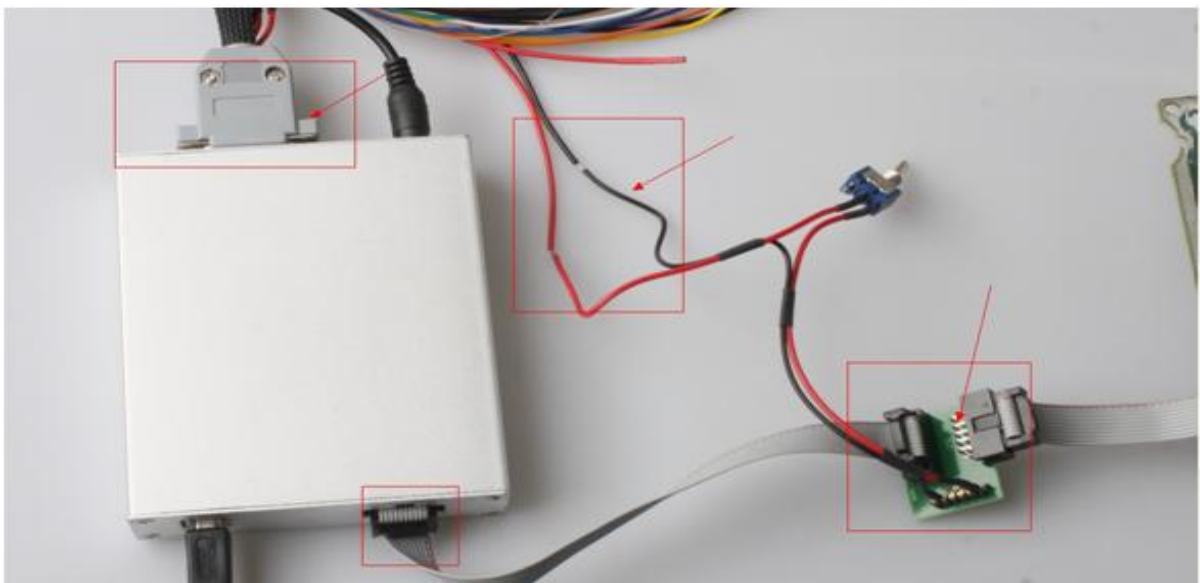


4. When the software and ECU has communication, please choose readall 【read ext flash】 【read eeprom】

www.jobd2.jp



Pay attention when the power adapter connect to the BDM cable, do not connect reversely, or the ECU will burned and damaged.



When you connect ECU BDM cable, please pay attention do it correctly, and the color of the cable should be not mistaken.

www.jobd2.jp

